

ESECUZIONE
ANTIDEFAGRANTE



CE 0722 Ex II 2GD Ex ed IIC T5/T6 - Ex tD A21 - IP 65

EX
CODE

CERTIFICAZIONE



CESI 00 ATEX 012
GOST R

CERTIFICATE

DIRETTIVA

94/9/CE

DIRECTIVE

NORME

EN 60079-0 - EN 60079-1 - EN 60079-7 - EN 61241-0 - EN 61241-1

STANDARDS

INSTALLAZIONE (secondo le EN 60079.14)

zona 1 - 2

(according to EN 60079.14) INSTALLATION

CARATTERISTICHE

Le armature illuminanti per tubi fluorescenti bispina con emergenza della serie LXB sono indicate per l'utilizzo in zona 1 e 2, in ambienti industriali ove siano richieste caratteristiche di robustezza ed in atmosfere fortemente aggressive.

Sono dotate di un gruppo di emergenza.

E' previsto il funzionamento soltanto in emergenza (tipo EE..)

o normale + emergenza (tipo EF..)

COSTRUZIONE

Custodia in lega di alluminio a basso contenuto di rame.

Tubi di protezione in policarbonato con autoestinguenza

garantita VØ (UL 94) resistente ai raggi UV.

Alimentazione standard 110/230V 50/60Hz.

Riflettore in alluminio verniciato bianco.

Portalamпада bispina.

Reattore elettronico ed interruttore di sicurezza.

Viteria inox.

Verniciatura epossidica Ral 7035.

Pressacavo UNI2XE

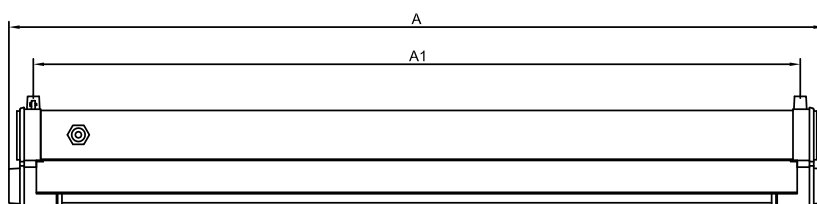
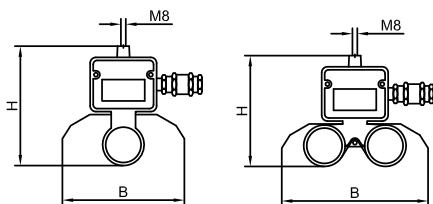
e tappo in poliamide PLG2IXEP.



ACCESSORI A RICHIESTA

Lampada.

Kit di installazione (a palina, a soffitto e a sospensione).



FEATURES

LXB series lighting fixtures for bi-pin fluorescent tubes with emergency unit are indicated for use in zone 1 and 2, in industrial heavy duty environments and in strongly aggressive atmospheres.

They are equipped with emergency unit.

Type EE works in emergency mode only while type EF works either normal or emergency mode.

CONSTRUCTION

Low copper content aluminium alloy body.

VØ (UL 94) guaranteed self-extinguishing and UV

resistant transparent polycarbonate cup.

Standard power supply 110/230V 50/60Hz.

White painted aluminum reflector.

Bi-pin lamp holder.

Electronic ballast and safety switch.

Screws in stainless steel.

Ral 7035 epoxy coating.

Polyamide cable gland UNI2XE

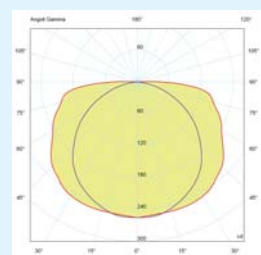
and plug PLG2IXEP.

ACCESSORIES UPON REQUEST

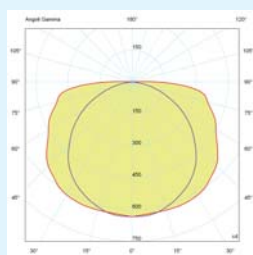
Lamp.

Installation kit (pole, ceiling and suspension mountings).

Curve fotometriche

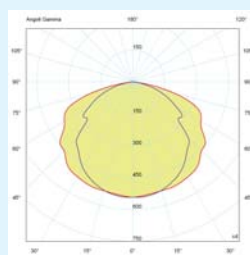


LXB 118 1x18W Fluor.

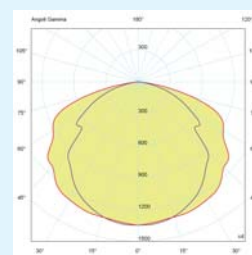


LXB 136 1x36W Fluor.

Photometric Diagram



LXB 218 2x18W Fluor.



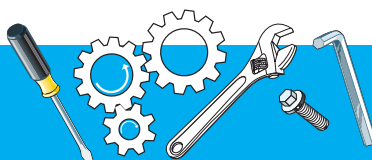
LXB 236 2x36W Fluor.

Codice Code	Dimensioni Dimension				Tipo funzionamento Working mode	Lampade Lamps n°	Alimentazione Supply	Watt Watt	Tempo di scarica Discharge time	Peso Weight Kg	Prezzo Price
	A	B	H	A1							
LXB-136EF4	1338	190	195	1258	normale+emergenza normal+emergency	1	110/230 V 50/60 Hz.	36	90'	16,00	
LXB-236EF4	1338	240	182	1258	normale+emergenza normal+emergency	2	110/230 V 50/60 Hz.	36	90'	18,00	
LXB-118EE4	730	190	195	650	solo emergenza emergency only	1	110/230 V 50/60 Hz.	18	120'		
LXB-136EE4	1338	190	195	1258	solo emergenza emergency only	1	110/230 V 50/60 Hz.	36	90'	16,00	
LXB-136EF7	1338	190	195	1258	normale+emergenza normal+emergency	1	110/230 V 50/60 Hz.	36	180'	16,00	
LXB-236EF7	1338	240	182	1258	normale+emergenza normal+emergency	2	110/230 V 50/60 Hz.	36	180'	18,00	
LXB-136EE7	1338	190	195	1258	solo emergenza emergency only	1	110/230 V 50/60 Hz.	36	180'	16,00	

Nota:
a richiesta modelli con tubi in vetro temperato (cod. LXB-...V)

Note:
products with tempered glass tubes on request (cod. LXB-...V)

Accessori per armature illuminanti serie EXEL, EXEN e LXB



Accessories for lighting fixtures EXEL, EXEN and LXB series

Codice Code	Descrizione	Description
G-0480	attacchi a palina - tipo P	pole suspensions fittings - type P
GOF-8	attacchi a sospensione con golfare - tipo O	suspensions fittings with eyebolt - type O
G-258	staffe angolari a 45° - tipo D	angle brackets 45° - type D
G-244	staffe a soffitto - tipo U	ceiling brackets - type U
G-263	staffe a soffitto - tipo V	ceiling brackets - type V